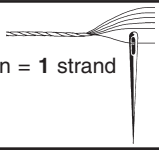


PERMIN

Scandinavian art needlework



Work with split yarn = 1 strand

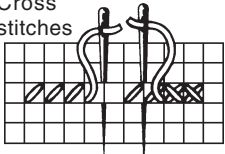


For this design please use Permin aida fabric. Item no. 340 in colour 00 (340/00)
Cut size: 12 x 12 cm

1 □ = 1 □ in the fabric
Count the design from centre of fabric

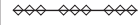
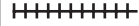
-  518. TURQUOISE
-  775. LIGHTEST BLUE
-  813. LIGHT BLUE
-  517. BLUE
-  823. DARKEST BLUE
-  926. LIGHT GREYISH BLUE
-  930. GREYISH BLUE
-  5200. WHITE

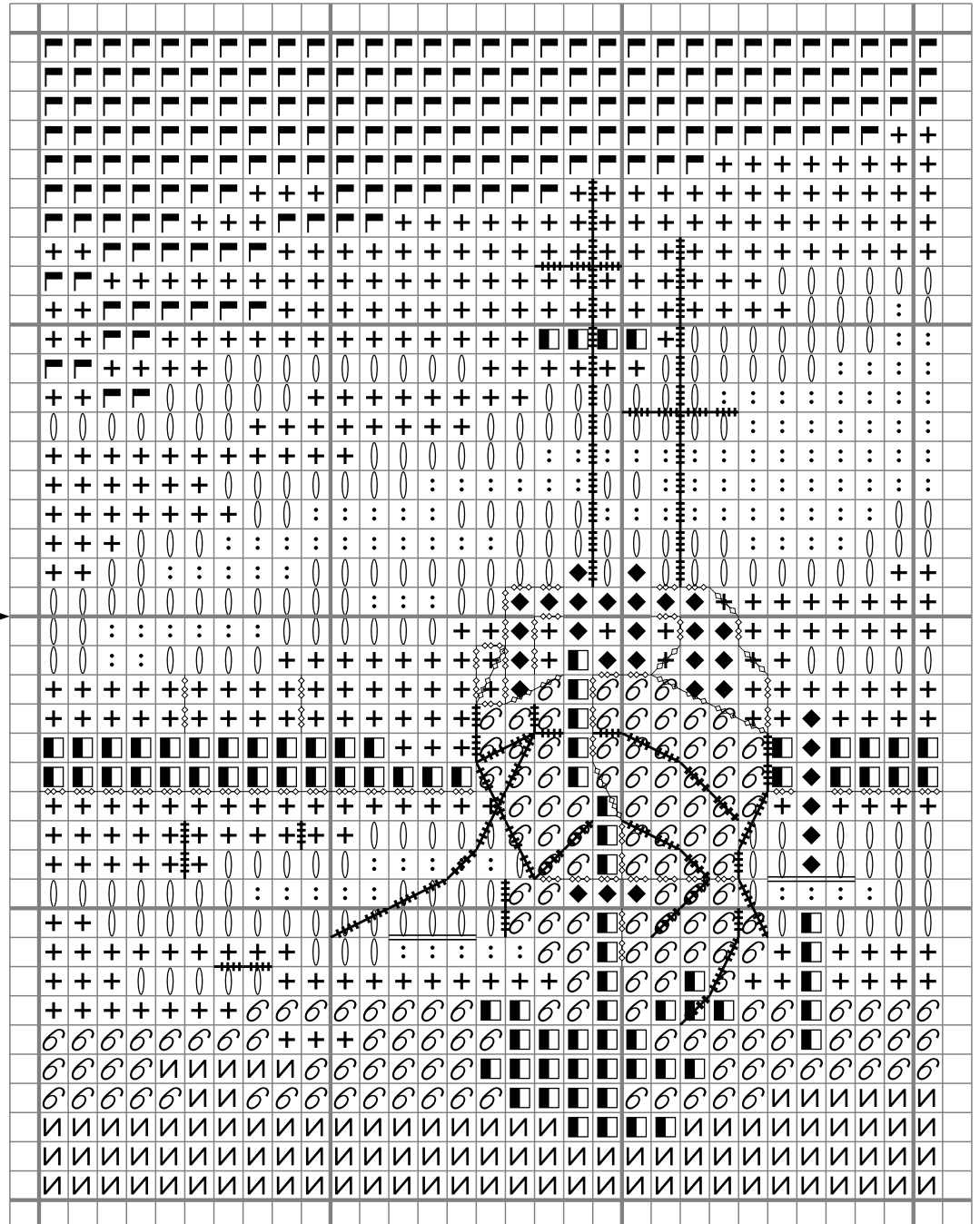
Cross stitches



Back stiches



-  518.
-  823.
-  930.



DMC
117



Made in Denmark©